

Chapter 2: Scales

1. Major



In whole steps and half steps, the construction of the major scale is W, W, 1/2, W, W, W, 1/2.

The C major scale in **thirds**:

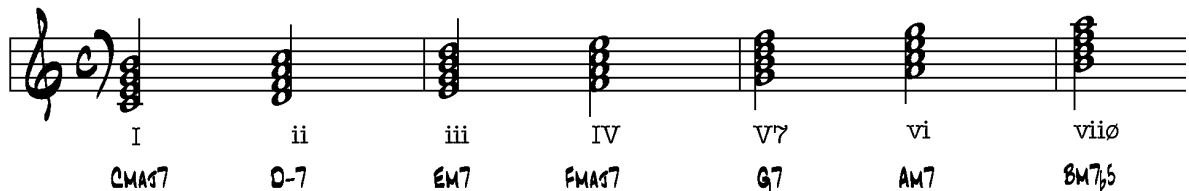


The thirds exercise should be extended to the entire range of the instrument. The upper and lower turnarounds in this example are arbitrary.

The C major **arpeggio**: (first, third, and fifth scale degrees). To play the arpeggio exercise, play these notes to the upper and lower extremes of your instrument.



Modes of the major scale and their harmonic functions:



The uppercase Roman numerals notate a major chord while the lowercase Roman numerals represent a minor chord.

Mode of Major Scale/ Greek Name	Related Seventh Chord
1 Ionian	Maj7
2 Dorian	Min7
3 Phrygian	Min7 b9 b13
4 Lydian	Maj7 #11
5 Mixolydian	Dom7
6 Aeolian	Min9 b13
7 Locrian	Min7 b5

MAJOR SCALES IN ALL KEYS

This image displays twelve musical staves, each representing a major scale in a different key. The scales are arranged vertically from top to bottom: C, D \flat , D, E \flat , E, F, F \sharp , G, A \flat , A, B \flat , and B. Each staff begins with a treble clef and a common time signature (C). The notes are written in a stepwise fashion, ascending and then descending. The key signatures are indicated by sharps or flats at the beginning of each staff. The scales are: C (C-D-E-F-G-A-B-A-G-F-E-D-C), D \flat (D \flat -E \flat -F-G-A-B-A-G-F-E-D \flat -C), D (D-E-F \sharp -G-A-B-A-G-F \sharp -E-D), E \flat (E \flat -F-G-A-B-A-G-F-G-A-B-A-G-F-G-E \flat -D), E (E-F \sharp -G \sharp -A-B-A-G-A-B-A-G-A-B-A-G-A-F \sharp -E), F (F-G-A-B-A-G-A-B-A-G-A-B-A-G-A-B-A-G-A-F), F \sharp (F \sharp -G \sharp -A-B-A-G-A-B-A-G-A-B-A-G-A-B-A-G-A-F \sharp -E), G (G-A-B-A-G-A-B-A-G-A-B-A-G-A-B-A-G-A-F), A \flat (A \flat -B \flat -C-D-E-F-E-D-E-F-E-D-E-F-E-D-E-F-E-A \flat -G), A (A-B-C \sharp -D-E-F \sharp -E-D-E-F \sharp -E-D-E-F \sharp -E-D-E-F \sharp -A), B \flat (B \flat -C-D-E-F-E-D-E-F-E-D-E-F-E-D-E-F-E-B \flat -A), and B (B-C \sharp -D \sharp -E-F \sharp -E-D-E-F \sharp -E-D-E-F \sharp -E-D-E-F \sharp -B).